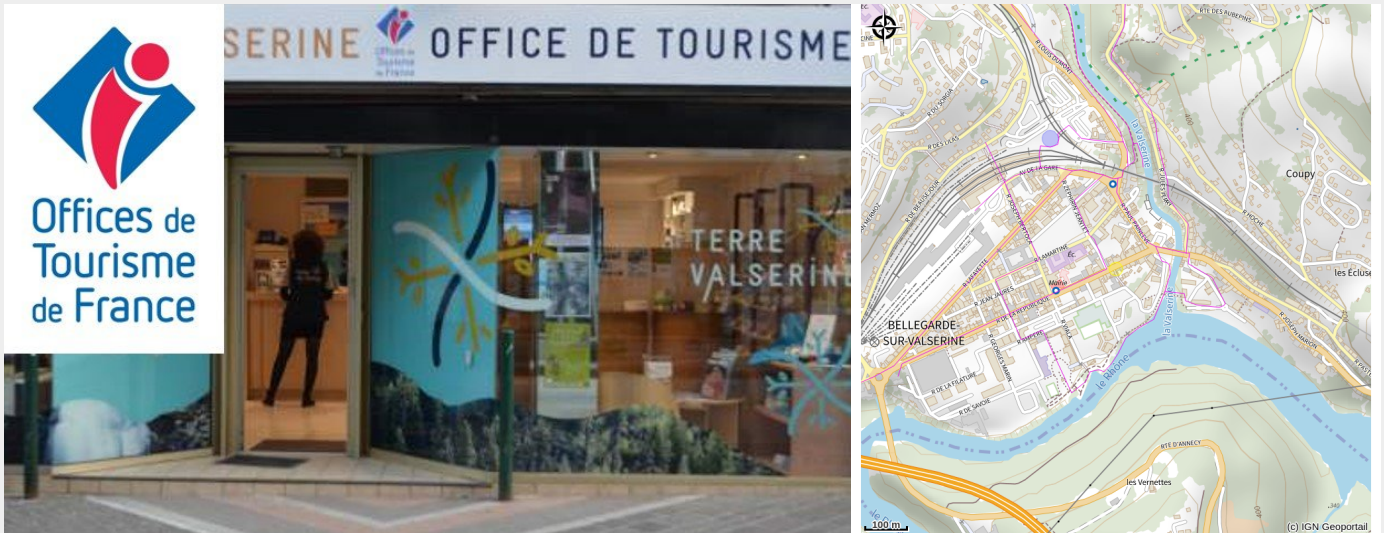


Terre Valserine

Terre Valserine



Attribution : Office de tourisme Terre Valserine (OT Terre Valserine)

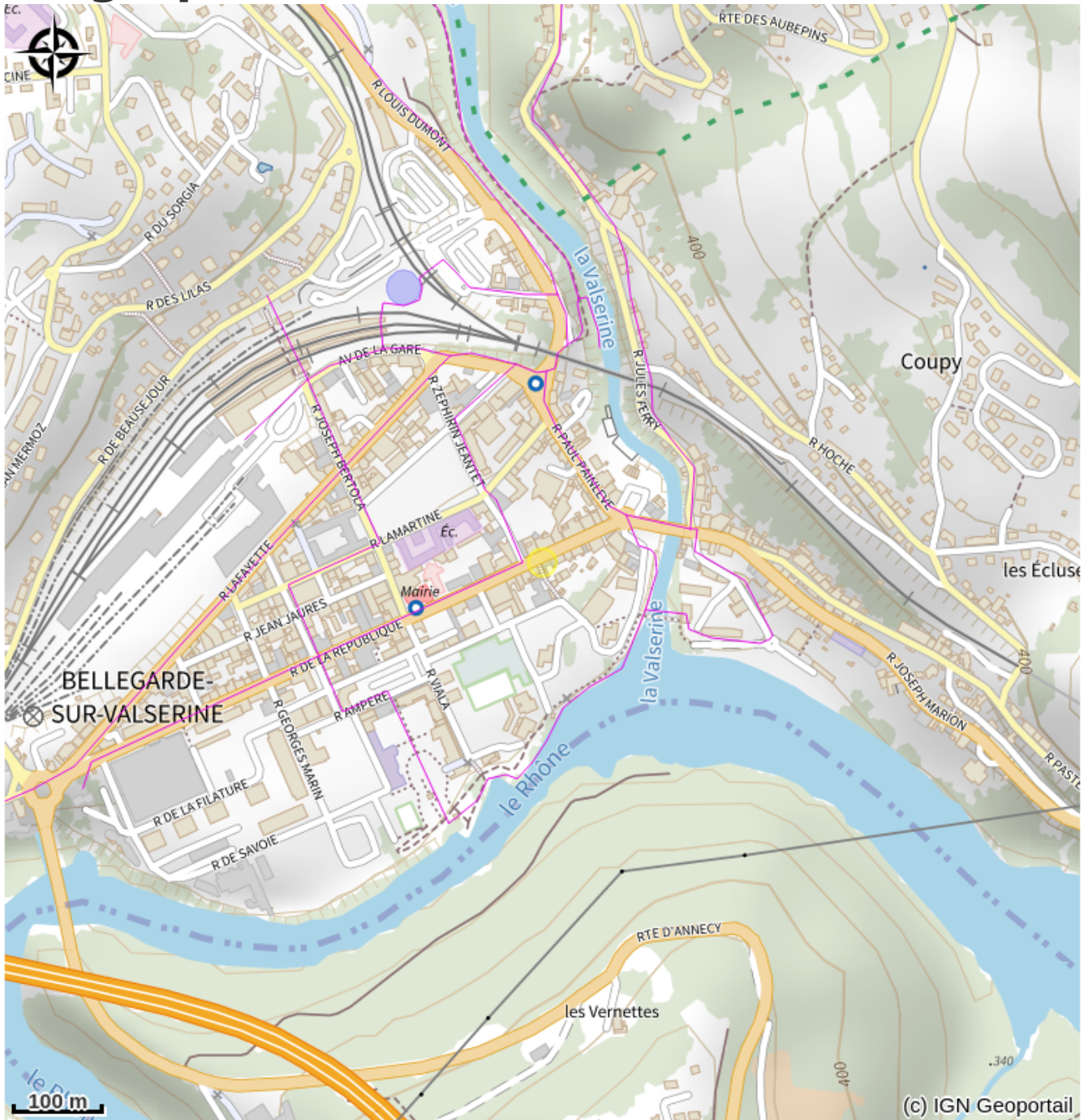
Where the Rhone and the Valserine meet, from the Plateau de Retord to the High Jura, Terre Valserine offers a wide range of exceptional landscapes at the centre of a region full of undisputed tourist attractions.

Useful information

Category : Services

Type : Tourist information centre

Geographical location



All useful information

Practical info

Services:

- Animals accepted
- Sale of fishing licences
- Wi-Fi access
- External information point

Opening times:

> From 01/07 to 31/08:

Monday to Saturday: 9am - 12:30pm and 2:30pm - 7pm

Sunday: 9am - 1pm

Bank holidays, i.e. 14 July and 15 August: 9am - 1pm

Contact

13 rue de la République
01200 Bellegarde-sur-Valserine
Tél. 04 50 48 48 68
info@terrevalserine.fr
<http://www.terrevalserine.fr>