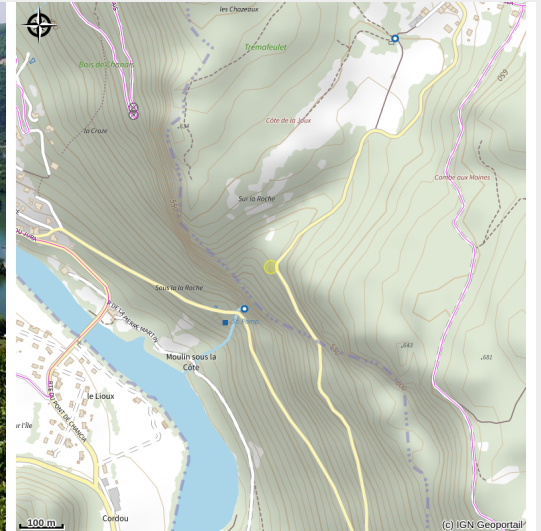


Sous la Roche belvedere

Terre d'Emeraude



Attribution : Vue sur le lac de Coiselet (PNRHJ - F. Jeanparis)

Take the time to appreciate the view: the blue waters of the Lac de Coiselet, created by a dam downstream, wind along the bottom of a distinct relief. With a bit of patience, you may see some of the birds of prey that nest in the nearby cliffs, and you can use the interpretive signs on-site to recognise their species.

Useful information

Category : Laid-out site

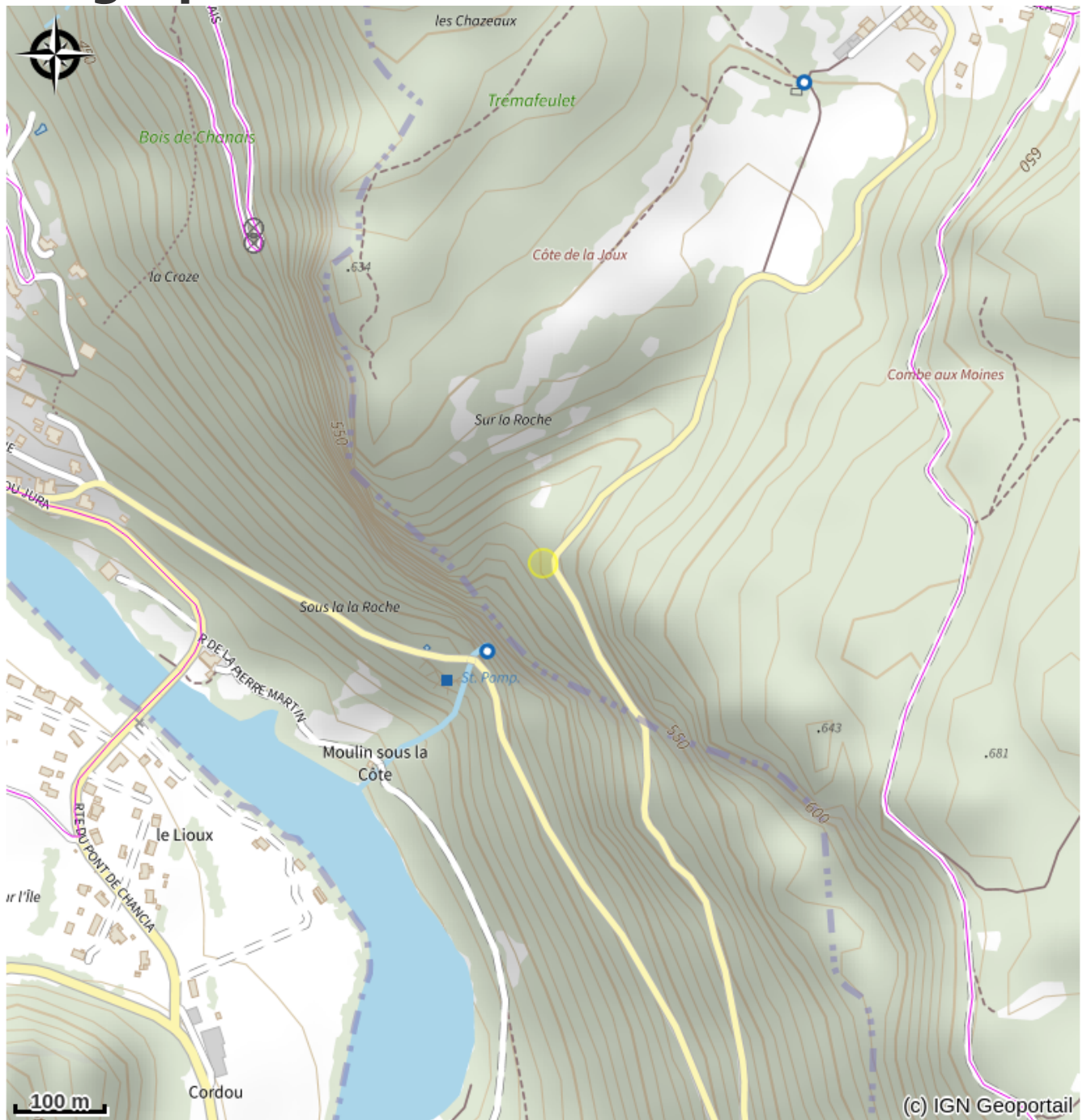
Themes : Fauna – Flora,
Landscapes

Description

Three interpretive signs are found on the belvedere near the parking lot; they invite visitors to observe the birds in their natural habitat.

- **An exceptional viewpoint for birdwatching**
- **The peregrine falcon's domain**
- **The peregrine falcon's in-flight hunt**

Geographical location



All useful information

Practical info

Recommendations: The road leading up to the belvedere is narrow and bendy. Don't hesitate to alert others to your presence by using your horn.

Road access: 12 km south of Moirans-en-Montagne via the D 299 and the D 295. The parking lot can be found on the edge of the D 295 that heads up between Chancia and Montclusel.

Suggested parking: belvedere parking lot, Chancia.

Contact

Office de Tourisme Jura Sud

3 bis rue du Murgin
39260 Moirans-en-Montagne
<http://www.jurasud.net/>
03 84 42 31 57

<http://www.meteociel.fr/previsions/13807/chancia.htm>