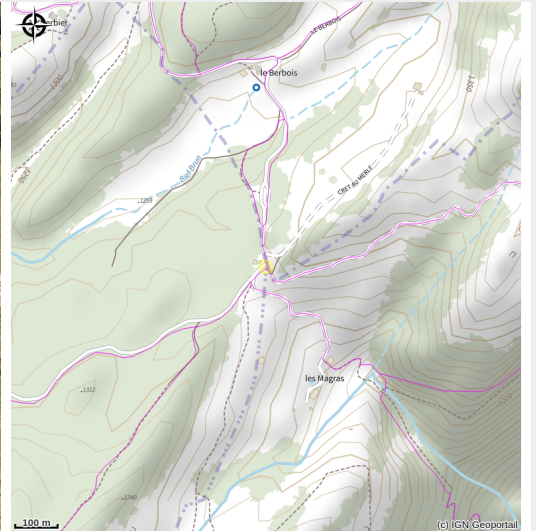


# La Borne au Lion (the Lion's landmark)

Terre Valserine



Attribution : Borne au Lion à Magras ((PNRH) / F.JEANPARIS))

*The long-standing point of departure to access the Chalam ridge and the Merle ridge, the Borne au Lion's panoramic landscape and history are worth the detour.*

## Useful information

Category : Laid-out site

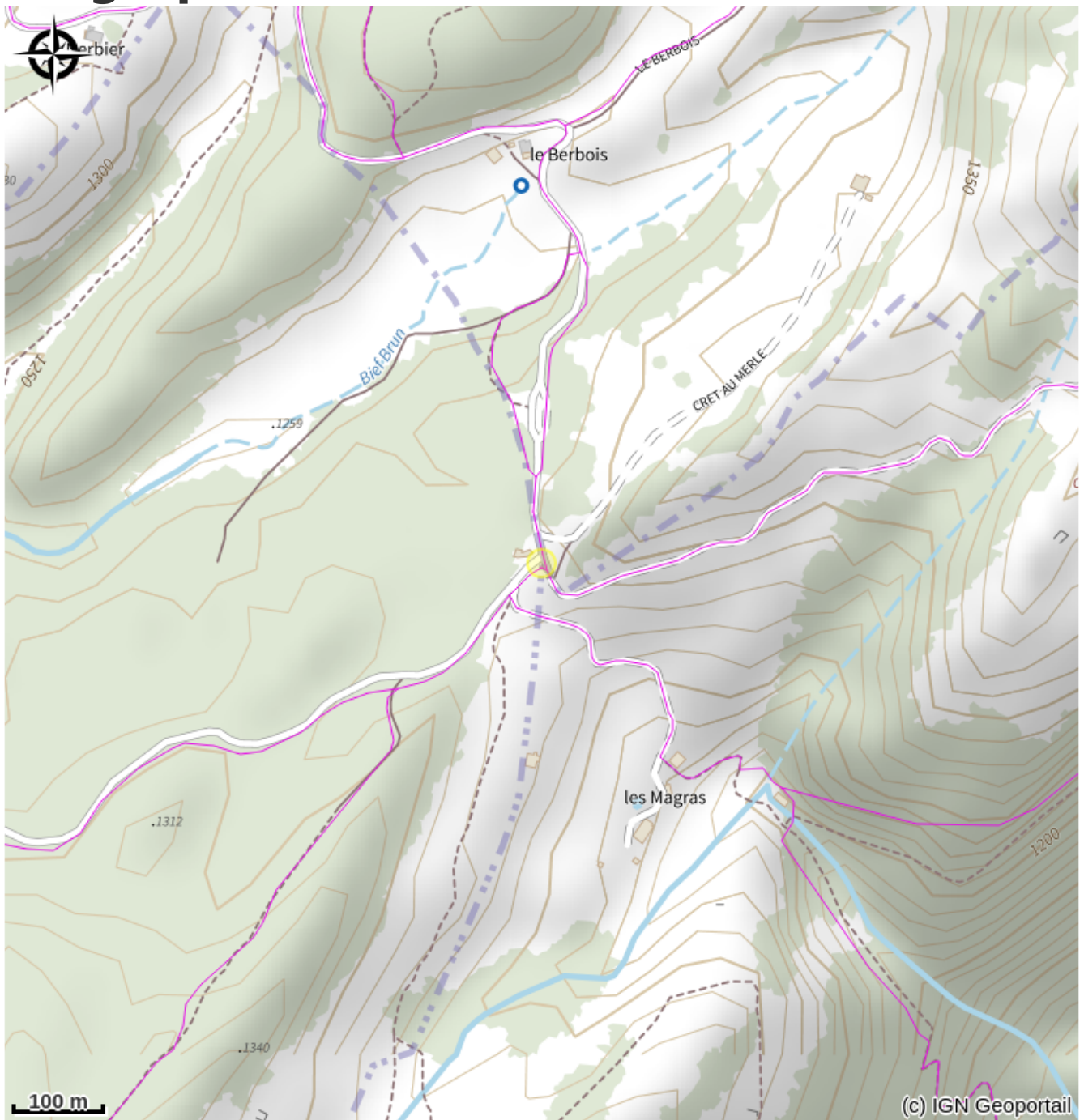
Type : Cultural & historical site,  
Nature spot

Themes : History & heritage,  
Landscapes

# Description

Marked by the border landmark and its three shields and erected in 1613, this place was a hot spot for the resistance; interpretive signs explain the wealth of this site, which is also equipped with picnic tables and a shelter.

# Geographical location



# All useful information

## Practical info

**Recommendations:** 150 metres from the last parking lot, the site is easily accessible to wheelchairs and pushchairs. Many herds of livestock summer in the neighbouring pastures: during your walks, keep your dog on a lead and remain on the waymarked paths, using the chicanes and turnstiles in place.

**Road access:** 4 km from La Pesse via the forest road of La Borne au Lion which you will find opposite the church.

**Suggested parking:** Several parking lots signposted along the La Borne road will help you to park. The last parking lot is located 150 metres from the site.

## Contact

Office du tourisme Haut-Jura Saint-Claude  
Bureau de La Pesse  
39370 LA PESSE  
Tél: 03.84.42.72.85  
<https://www.saint-claude-haut-jura.com>  
[http://www.meteociel.fr/previsions/14099/la\\_pesse.htm](http://www.meteociel.fr/previsions/14099/la_pesse.htm)